



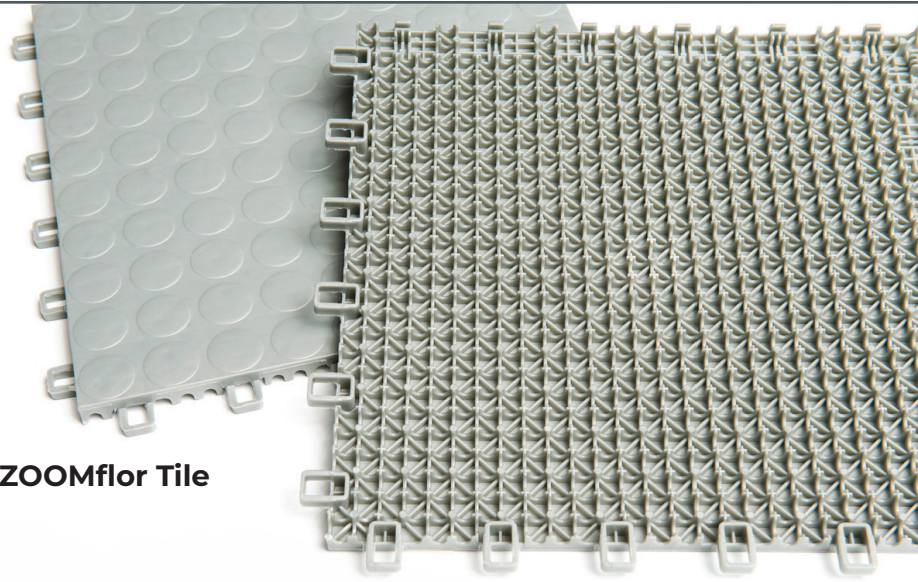
ZOOMflorTM

Installation Manual

The ZOOMflorTM modular floor tile system will enhance the look of garage floors, play rooms, basements, show rooms, decks, gyms or any hard surface flooring. Each 12" x 12" ZOOMflorTM tile is molded in a high-quality, prime grade High-Impact Copolymer plastic. This makes them strong and tough enough to sustain the weight of your car, truck or SUV.

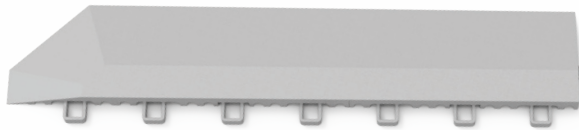
ZOOMflor Anatomy

ZOOMflor tiles are comprised of six loops on two sides, and six pegs on the other two sides. The free-flowing underside allows water and moisture to escape.

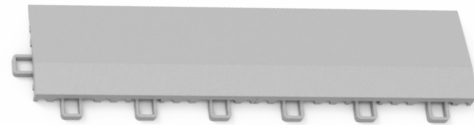


12x12 ZOOMflor Tile

Corner Loop Ramp



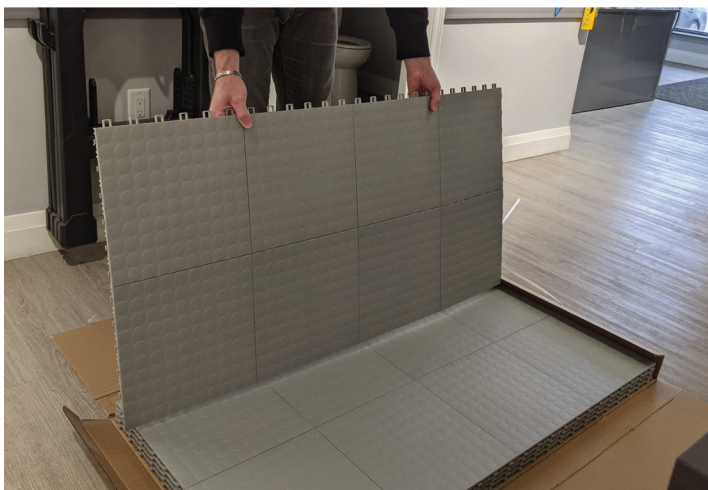
Edge Loop Ramp



Corner Peg Ramp



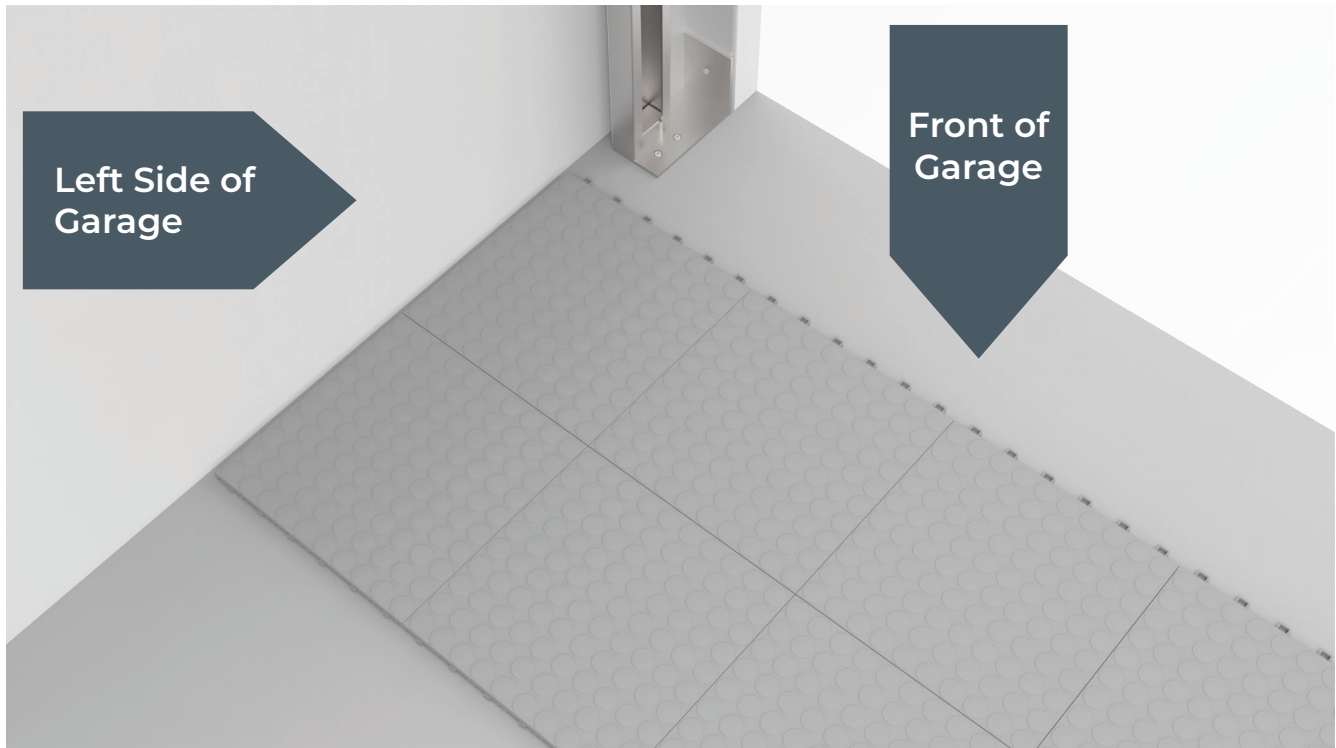
Edge Peg Ramp



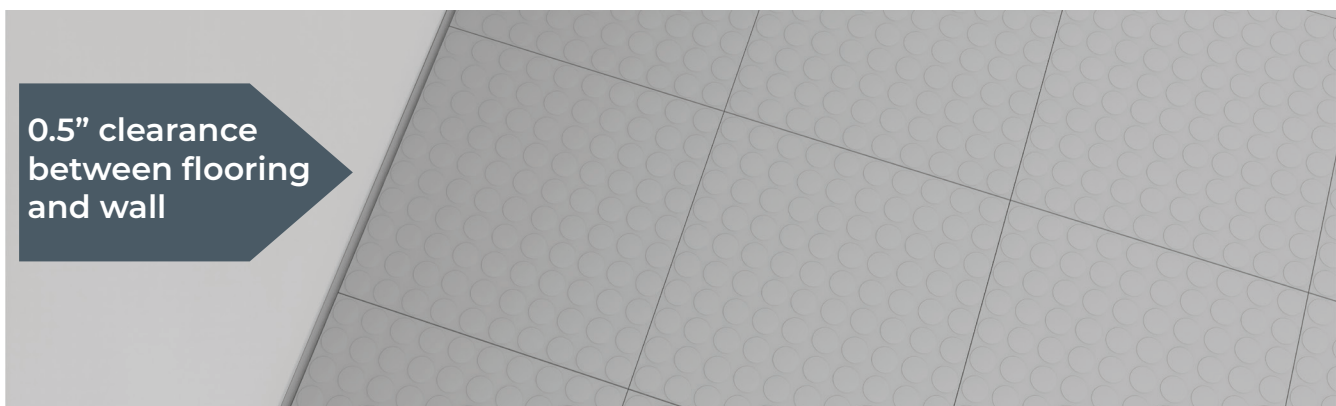
For convenience, the ZOOMflor tiles will ship in sheets of eight preconnected tiles (2x4 configuration).

General Assembly Instructions

To install the ZOOMflor, start at the front of the garage in the left hand corner. Orient the tiles with the pegs facing the wall and corner, and the loops facing outward.



Leave a 0.5" inch gap between the wall and the tiles to allow for expansion due to temperature variations. If no space is left, the tiles will warp due to thermal expansion.



General Assembly Instructions

To connect the tiles, keep the orientation of all tiles the same way as you started (all loops should face the same direction), and line up the pegs of the next tile with the loops of the tile that has already been laid. Then, place your weight on the tiles that have already been laid (to stabilize) and tap on the newly connected loops/pegs with a rubber mallet. You will hear an audible 'snap' as the tiles lock into place.



Line up the
pegs of the
next tile
with the
loops of the
preceding
tile

Work your way from left to right and continue to line up the pegs of the new tiles with the loops of the previously laid tiles, tapping each joint with a rubber mallet to lock the tiles together.

Separating Tiles

Once you reach the end of the wall, you may need to disconnect some of the tiles from the sheet if the sheet is too long to fit.

To separate the tiles, flip the sheet over and determine which side has the loops and which has the pegs.



Separating Tiles

After you have identified the loop side and the peg side, you will flip the sheet back over and lay it flat on the ground (top facing up, just as you were laying them). Place your weight on the loop side and pull up on the peg side in a unidirectional motion. You will essentially be pulling the pegs out of the loops.



It is very important to only pull up on the peg side. If you pull up on the loop side you can break the loops.

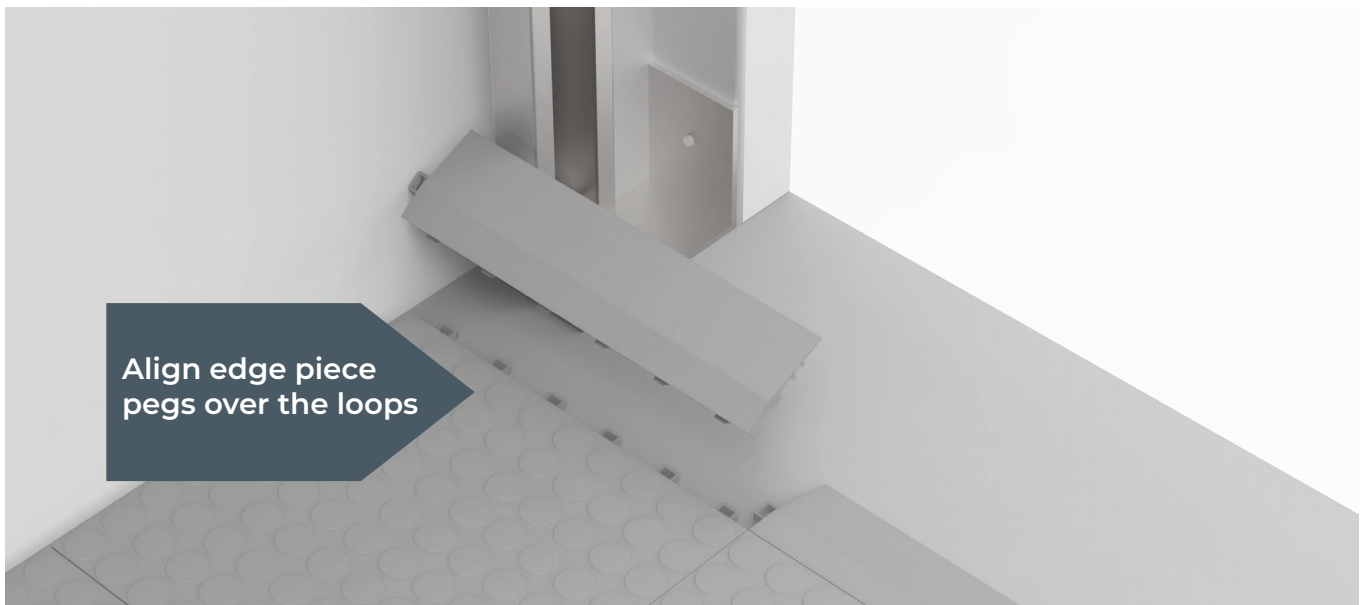
Attaching Edge Pieces

When you get to the front of your garage you will need to attach edge pieces to the front of the ZOOMflor tiles. The edge pieces act as ramps to allow easy entry for vehicles into the garage as well as eliminate any trip hazards.

You will need to use the Edge Peg pieces, since the loops of the tiles will be facing the garage door. Prior to attaching the edge pieces it is important to make sure that you allow clearance between the edge piece and the garage door. As with the tiles, this is to allow room for climate related expansion.



To attach the ramps, align the ramp pegs over the tile loops. As with the tiles, the edge pieces are attached to the tiles by tapping the newly aligned loops/pegs with a rubber mallet.



Special Consideration for Finishing a Wall-to-Wall Installation

There are two methods of doing a wall-to-wall installation:

The first method is to only utilize the edge pieces at the front of the garage. Edge pieces are necessary to create a ramp which will allow easy access for vehicles. This is the simplest and most cost effective method, as it does not require edge pieces to be attached to the entire perimeter of the tiles. When using this method the edges of the tiles could either be left as-is, with the tiles on the left side having loops, or a jigsaw or multitool could be used to remove the visible loops from the tiles at the perimeter. If doing this, keep in mind that these tiles will not be able to be reconfigured at a later date as they will not have loops on one side.

Another benefit of utilizing the first method is it will give the installer the ability to cut the tile pieces around the perimeter of the floor so the tiles cover the entire floor (rarely will a garage floor be perfectly covered by exclusively using whole tiles).

The second method is to utilize edge pieces all the way around the perimeter of the ZOOMflor tiles. To do this, simply attach the Edge Loop pieces to all tile pegs, and attach the Edge Peg pieces to all tile loops (as shown previously).

This method will seldom allow for complete coverage, as a garage floor plan will rarely be perfectly covered only using whole tiles. If a partial course of tiles is used around the perimeter (as specified in the first method) edge pieces will not be able to be utilized on any partial tiles since the loops and pegs would be cut off.

Special Consideration for Finishing a Wall-to-Wall Installation

It is recommended (though not necessary) to paint the edges of the garage that will not be covered by the ZOOMflor tiles (the space which is left for clearance due to thermal contraction/expansion). A paint store can do a custom color match to ensure that the paint matches the flooring tiles which will provide a clean, seamless look. This should be done prior to installation of the tiles.

An epoxy paint will last longer than latex paint. Behr Concrete and Masonry Bonding Primer used in conjunction with Behr Premium 1-Part Epoxy Concrete and Garage Floor Paint is a common and high-quality brand.

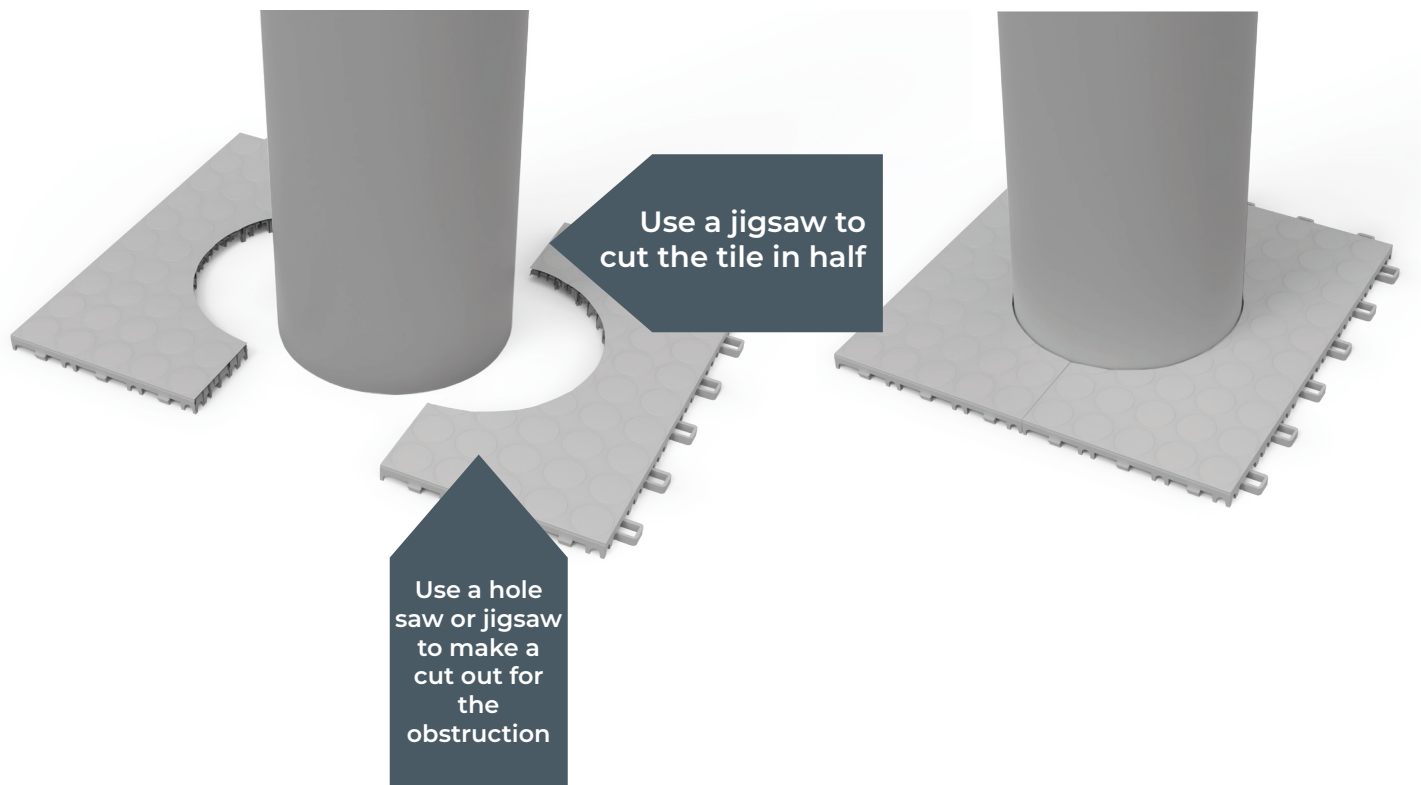
Again, this step will not affect the functionality of the ZOOMflor, but it will provide an aesthetically pleasing look.

Making Cutouts for Obstructions

There are two ways that obstructions can be accommodated:

The first and simplest method is to leave out a tile where the obstruction is located, e.g. if there is a column in the garage, simply lay tiles around the column. To obtain a clean look, it is recommended to remove any visible loops from the tiles around the column.

The second method is to make a cutout in the tile that would go where the obstruction is located. It is recommended to use a hole saw or jigsaw for this. Leave at least 0.5" clearance between the edge of the tile and the column (or other obstacle) to allow for expansion. If working around a column, you will need to cut the tile in half after you make your circular cutout. This will allow you to fit the tile around the column..



Cleaning and Maintenance

ZOOMflor is made of 100% polypropylene. This is a non-porous, high-impact material (hard plastic) which means that dust and grime will sit on top of the tiles and not in the tiles as it would with concrete or other semi-porous materials. Because of this it is nearly impossible to stain or discolor ZOOMflor; in fact, if petroleum based products are spilled on the tiles they will not stain.

Still, every floor needs to be cleaned. We recommend using a dust mop or soft bristled broom to remove routine dust and dirt. A shop vac with a floor brush attachment could also be used.

For deep cleaning it is recommended to mop the floor using a non-sudsing floor cleaner diluted with hot water. Frequently changing the water/cleaning solution will give you the cleanest floor (the level of grease and grime you are cleaning will determine how many times you should change the water/cleaning solution). Stubborn grease marks can be removed by using a grease remover solution such as TSP (trisodium phosphate) or Goo Gone and a soft sponge or microfiber rag.

It is not recommended to use a sudsing floor cleaner as this can leave a film on the floor which will attract more dust.